



CIRO 1/4-20 UNIVERSAL BALL MOUNT

Parts Included:

- 1 Ball Post**
- 1 1/4-20 Serrated Flange Nut**
- 1 1/4-20 x 1" Stud**
- 1 1/4-20 x 2" Stud**
- 1 Finishing Washer**

Installation Instructions:

1. Park on a level surface and shut off the bike.

Ensure that the engine has had time to cool before installation.

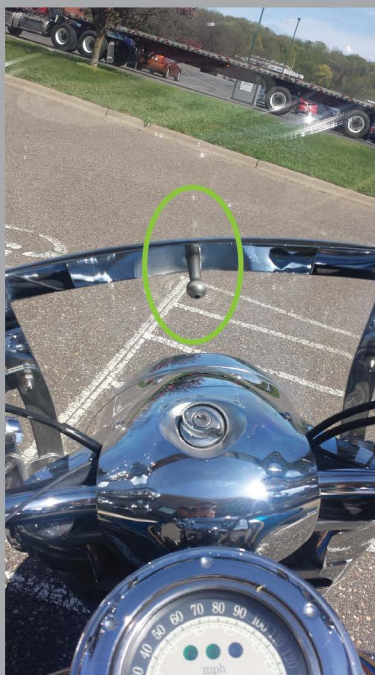
2. Assemble the ball post, 1/4-20 stud, and finishing washer by screwing the stud into the ball post and tightening with an 1/8" and 3/16" allen. Determine the length of stud to use based on your mounting location. This part will mount anywhere there is a 1/4-20 bolt or hole.



3. Install in your selected location using an 1/8" allen. Examples are shown below.



***If you have purchased any *Ciro* accessories to go with your ball mount, please refer to those instructions to complete your installation.**



WARNING:

This indication alerts you to the fact that ignoring the contents described herein can result in potential serious injury or death if not followed.

CAUTION:

This indication alerts you to the fact that ignoring the contents described herein can or will result in material damage and/or personal injury.

ATTENTION:

This indication alerts you to the fact if you ignore this detail you will affect the performance or functionality of the product.

All *Ciro* products are designed for "easy assembly" and/or "plug and play". We recommend a competent mechanic install our products, using standard mechanical procedures to assure a safe and successful installation.

NOTE:

***Ciro* products are designed and manufactured under very strict quality control. *Ciro* products are warranted to be free of defects in material and workmanship for 1 (one) year from date of purchase by the consumer.**

***Ciro* will have no obligation if the customer cannot show proof of purchase.**

Warranty will not be granted unless the part is properly installed and maintained.

***Ciro* will not be liable for any consequential and incidental damages, including labor, or non-*Ciro* products.**

Please visit our website Ciro3d.com for our complete warranty policy.

CIRO3D.COM



CIRO DRINK HOLDER

Parts Included:

- 1 Drink Holder Assembly**

Installation Instructions:

- 1. Remove the large plastic nut from your drink holder and slide it over the
Ciro ball mount with the threads facing outward.**



- 2. Snap your drink holder onto the ball and thread the large plastic nut back
onto the drink holder. Adjust the angle, tighten it down, and you are ready
to go.**



WARNING:

This indication alerts you to the fact that ignoring the contents described herein can result in potential serious injury or death if not followed.

CAUTION:

This indication alerts you to the fact that ignoring the contents described herein can or will result in material damage and/or personal injury.

ATTENTION:

This indication alerts you to the fact if you ignore this detail you will affect the performance or functionality of the product.

All Giro products are designed for "easy assembly" and/or "plug and play". We recommend a competent mechanic install our products, using standard mechanical procedures to assure a safe and successful installation.

NOTE:

Giro products are designed and manufactured under very strict quality control. Giro warrants that products sold to the original purchaser shall be free from any defects in materials and workmanship for a period of 3 (three) years from the date of purchase, and a lifetime warranty against LED failure.

Giro will have no obligation if the customer cannot show proof of purchase.

Warranty will not be granted unless the part is properly installed and maintained.

Giro will not be liable for any consequential and incidental damages, including labor, or non-Giro products.

Please visit our website Ciro3d.com for our complete warranty policy.

CIRO3D.COM